

EDUCATOR'S GUIDE

ALICE

(in wonderland)

FEBRUARY 10-19, 2023
MUSIC HALL



cincinnati
BALLET

PRESENTING SPONSOR

Dinsmore
LEGAL COUNSEL

SAMANTHA RIESTER
PHOTOGRAPHY: AARON M. CONWAY




TABLE OF CONTENTS

2	ATTENDING LIVE PERFORMANCES
3	SYNOPSIS
6	CHARACTER GUIDE
8	PRODUCTION STAFF
9	CREATING WONDERLAND
11	BOOK BEHIND THE BALLET
12	MAD HATTER RIDDLES
12	DISCUSSION GUIDE
13	ELA ACTIVITIES
14	CONNECTED VOCABULARY
15	MATH
16	SCIENCE
17	SOCIAL STUDIES AND HISTORY
18	ART
19	GAMES
22	ANSWERS



MICHAEL MENGDEN | PHOTOGRAPHY: AARON M. CONWAY

USING THIS GUIDE

- ♥ Any page with the Cincinnati Ballet icon in the right corner is designed for you to distribute to your students. 
- ♣ 'Classroom Connections' will integrate the performance and ballet into many different subjects.
- ◆ Worksheets and printable resources may be found at the end of this guide.
- ♠ Please feel free to send your suggestions or pictures of your students' work to education@cballet.org.

ATTENDING LIVE PERFORMANCES

- ♥ The Ballet is a LIVE experience. There are no CGI edits or re-takes. Be sure to keep your eyes and ears on the performance and do your best not to distract other audience members around you.
- ♣ Silence or turn off all electronic devices unless you are using them for accessibility purposes. There is no video recording or photography of any kind during the performance.
- ◆ We welcome discussion and questions about the performance, but we ask that you save your thought for intermission or after the performance.
- ♠ We encourage laughter and applause during the performance.
- ♥ Think ahead and use the restroom prior to the start of the performance.
- ♣ Please stay in your assigned seat and keep your feet on the floor in front of you. If they do not reach, we ask that you do not kick the seat in front of you.
- ◆ The ushers are there to guide you to your seat and answer any questions you might have about navigating Music Hall.



FUN FACT

MUSIC HALL HAS BEEN A POPULAR DESTINATION FOR ALL TYPES OF MUSIC INCLUDING POPULAR ARTISTS SUCH AS FRANK SINATRA, MILES DAVIS, BRUCE SPRINGSTEEN, PRINCE, AND ELTON JOHN.

SYNOPSIS



PROLOGUE

Alice daydreams as her family swirls around her chaotically. She is mesmerized by the mysterious and quirky Lewis Carroll, a family friend, who takes Alice on a boat ride and picnic in the country.

DOWN THE RABBIT HOLE

During their picnic, Lewis Carroll begins telling Alice an astounding story of a little girl's adventures in a wonderland. As Alice drifts to sleep, a White Rabbit hops by. The nervous Rabbit checks his pocket watch because he's late. He quickly leaps into a rabbit hole; Alice follows. She falls for what seems like miles. Alice lands with a thud in a hall way filled with doors. She drinks a potion and grows quite tall; she fans herself and shrinks quite small. Through a



keyhole, the tiny Alice catches her first glimpse of the evil Queen of Hearts. When Alice eats a bit of cake and returns to normal size, she can no longer fit through the tiny door that leads to the wondrous world .



SYNOPSIS



POOL OF TEARS AND THE CAUCUS RACE

Frightened and confused, Alice cries a pool of tears. The Dormouse swims by and befriends Alice. Then, a Dodo Bird, an Eaglet, and a flock of Flamingos plop into the pool. The Dodo Bird decides the best way to get everyone dry is to dance a Caucus Race.

PIG AND PEPPER

Alice comes upon a Fish footman who is delivering an invitation to the Queen of Hearts' croquet game to the Frog footman who works for the Duchess. Inside the Duchess' cottage, bedlam reigns. The Duchess is agitated because the Cook has put too much pepper into the soup.

THE CHESHIRE CAT / ADVICE FROM A CATERPILLAR / THE MAD HATTER'S TEA PARTY

While walking along, Alice comes upon a Cheshire Cat, who appears and disappears on a whim. Later, when Alice looks up to the sky she finds he has become the moon. She then meets a peculiar Caterpillar who smokes a hookah pipe before metamorphosing into a butterfly before her eyes. Next, Alice stumbles into a puzzling tea party with the Mad Hatter, the Mad Hatter, the March Hare and the Dormouse.



SYNOPSIS



ACT II: QUEEN'S GARDEN PARTY AND CROQUET GAME

Card gardeners have accidentally planted white roses in the Queen's garden. The Queen of Hearts only wishes to grow red roses. Fearing her wrath, they paint the roses red. The Queen's court spills by and Alice sees her friend the White Rabbit and the Queen's Jocker. Alice is invited by the Queen to play a very different game of croquet using Flamingo mallets and Hedgehogs as croquet balls. Blaming the Hedgehogs and the angry Queen chases her into the forest.

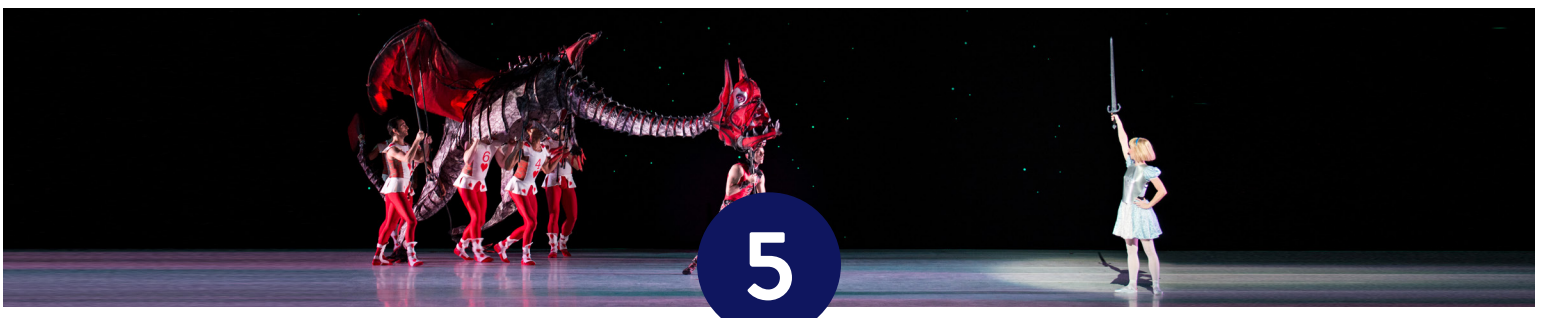
TWEEDLE DUM AND TWEEDLE DEE AND THE JABBERWOCK

In the forest, Alice happens upon a Rocking-Horse-Fly, a Bread-and-Butterfly, and beautiful Snap-Dragon-Flies. Tweedle Dum and Tweedle Dee playfully argue as they pass by. Alice reflects on her amazing journey with the Cheshire Cat, the Mad Hatter, the White Rabbit, and Tweedle Twins. The languid group is suddenly threatened by the ultimate danger: the Queen's Jabberwock. To protect her new friends, Alice slays the beast.



THE TRIAL AND HOME AGAIN

Back at the Queen's palace, Alice is arrested and put on trial for her crime. Utter confusion breaks out in the court while the Queen shouts, "Off with her head" Alice realizes the silliness of the Queen and her court and they fall like a house of cards. She awakens from her dream and finds herself at home.



CHARACTER GUIDE



ALICE

Protagonist of the story, a curious girl who falls down a rabbit hole

LEWIS CARROLL

A quirky author who tells Alice's story; the original author of *Alice in Wonderland*



WHITE RABBIT

An anxious rabbit who is the Queen's royal herald

QUEEN OF HEARTS

Alice's primary antagonist, who is quick to offend and rules with terror.



CHARACTER GUIDE



MAD HATTER AND THE MARCH HARE

Hosts of a wacky tea party,
speaks in riddles

CHESHIRE CAT

A mischievous cat with a
broad grin



JABBERWOCK

A monstrous creature owned by
the Queen of Hearts

TWEEDLE DEE AND TWEEDLE DUM

Troublemaking twins who
befriend Alice



PRODUCTION STAFF



Live performance is a collaborative art form. Many artists work together to create the production you see onstage. Each artist is skilled in their element but also must understand how their work relates to and functions with the productions as a whole. Below are a few of the people that come together to make *Alice (in wonderland)*.

The **CHOREOGRAPHER** provides movement and steps for the dancers. In ballet, the dance steps tell the story.

The **COMPOSER** writes the music that the dancers dance to and the musicians play.

The **DANCERS** learn their steps and movements to make the characters come to life in a believable way. There are so many characters in Wonderland some of the dancers dance multiple roles.

The **SCENIC DESIGNER** plans the environments of the performing space. The scenery is painted and created by talented artists. The set must serve the needs of the story but also sets the mood and tone of the performance.

The **COSTUME DESIGNER** designs the costumes for the dancers to wear. The wardrobe department at Cincinnati Ballet creates those costumes. Many of them must be handsewn.

The **STAGE MANAGER** facilitates communication across all creative and production departments. They also call all of the technical cues for each performance to make sure the lights and scenic changes happen at exactly the right time.

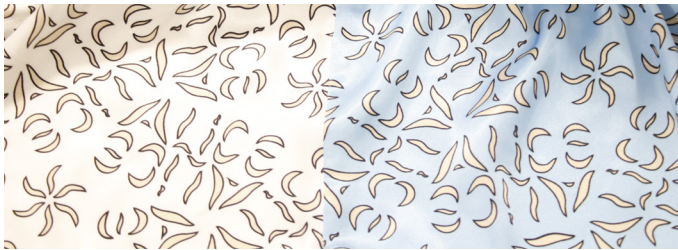


CREATING WONDERLAND

Liz Vandal designed the colorful costumes seen on stage in *Alice (in wonderland)*. These costumes are certainly eye-catching from afar, but they are all worth a closer look. Each costume has tiny, almost hidden, details that add to the complexity of the final look!

ALICE

Alice wears a pretty blue and white dress with an interesting pattern. Look closer at the pattern on her dress. It is actually her name 'ALICE' over and over again.



THE WHITE RABBIT

The cut-out pattern on The White Rabbit's neck scarf is the same 'ALICE' pattern reflected in the pattern on Alice's dress.

The neck scarf tie and all the trim on his vest has tiny key hole embellishments every couple of inches.

Also notice the clocks decorating his coat and pants.



CREATING WONDERLAND

QUEEN OF HEARTS

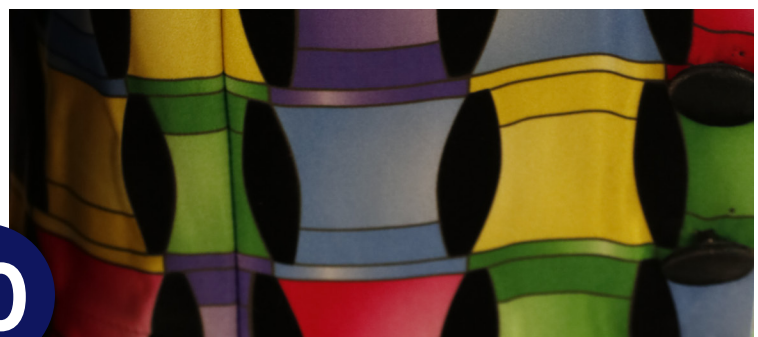
The Queen of Hearts wears an elaborate, stiff, red collar and half train peice. Look closer at the collar and train and you will notice the letter 'Q' circling the collar and half skirt.



THE MAD HATTER

The Mad Hatter's name is written in a beautiful script and worked into a pattern that covers his vest and jacket lining.

Look closely at the colorful shapes that make up the pattern on his jacket. Can you see that the pattern is made up of tiny little top hats?



BOOK BEHIND THE BALLET

ALICE (in wonderland) is based on two separate novels, *Alice's Adventures in Wonderland* written in 1865, and the 1871 sequel, *Through the Looking-Glass, and What Alice Found There*. Both written by author Charles Lutwidge Dodgson under the pen name Lewis Carroll. Each novel tells the story of Alice entering into Wonderland, a crazy land inhabited by eccentric, outlandish characters who live very differently than the people in Alice's world. The books were an immediate success and remain some of the best-known books in children's literature.

The character of Alice was based on a real little girl, Alice Liddell. Alice Liddell shares many characteristics with the Alice character in the book. She was described as stubborn, precocious and curious. One "golden afternoon" on a boating trip, the author, Dodgson (Carroll) told the real-life Alice and her sisters a story that would become *Alice's Adventures in Wonderland*. The little girl begged him to write it down and three years later the book was published.



Alice Liddell age 7, photographed by Charles Dodgson (Lewis Carroll) in 1860. Wikimedia Commons.



Illustrations by John Tenniel (1865)

MAD HATTER RIDDLES

During the Mad Hatter's Tea Party, he entertains his guests by asking nonsense riddles. Ask your students some of his riddles and see how they do!

1. RIDDLE 1: What two things can you never have for Breakfast?

ANSWER: Lunch and Dinner

2. What loses its head in the morning but gets it back at night?

ANSWER: A Pillow

3. What has a bed but never sleeps?

ANSWER: A River

4. What kind of room has no windows or doors?

ANSWER: A Mushroom



MICHAEL MENGDEN | PHOTOGRAPHY: AARON M. CONWAY

DISCUSSION GUIDE

Use the following prompts as essay questions or for discussion before and after the show.

PRE-SHOW - Sample Discussion/Essay Questions

1. Have you seen/read *Alice in Wonderland*?
2. What is a dream? Do you dream? Do you remember your dreams?
3. Look at the character guide. Which character are you most excited to see? Why?
4. Would you rather be too big or too small? Why? Revisit this question after you have seen Alice's adventure.
5. What are you most excited about in attending this live ballet performance?

POST SHOW - Sample Discussion/Essay Questions

1. What was your favorite part of the ballet?
2. Who was your favorite character in the ballet?
3. What were some of the ways the production elements were used to tell the story?
4. How is watching a ballet different than watching a play or movie?
5. How did the dancers use their bodies to tell the story?

CLASSROOM CONNECTIONS

ELA ACTIVITIES

Describe your own wonderland.

Alice fell down the rabbit hole into a wonderful world full of weird creatutes and magical places. Imagine you fell down a rabbit hole and experience your own version of Wonderland. What would it look like? What chaaracters live there? What kind of dangers might you encounter? Experience a whole new kind of wonderland. What would this look like?

Wonderland Characters in the Real World

What would happen if the Wonderland characters were here in Cincinnati, or your hometown. Write a scene where one of the characters is interacting with a real-world character. For example, the Mad Hatter and a waiter at the Olive Garden.

CONNECTED VOCABULARY

1. **Curious** - a) Eager to know or learn something b) Strange; unusual
2. **Quirky** - Characterized by peculiar or unexpected traits
3. **Protagonist** - The leading character or one of the major characters in a drama, movie, or other fictional text
4. **Antagonist** - A person who actively opposes or is hostile to someone or something; an adversary
5. **Collaborative** - Produced or conducted by two or more parties working together

CLASSROOM CONNECTIONS

MATH

Alice is 50 inches tall at the start of the story, and she comes across a door that is 15 inches high. When she enters through the door, she is 10 inches high. Using this knowledge, answer the following questions.

1. How tall would the door have been in Alice's normal world?
2. Later, Alice grows to 9 feet tall. How many inches did she grow if she started at 10 inches? How many inches did she grow if she started at her original height to 50 inches?
3. *Alice in Wonderland* was written in England where they use the metric system. Convert these measurements using the metric system.



PHOTOGRAPHY: PETER MUELLER

CLASSROOM CONNECTIONS

SCIENCE

The dodo bird was a flightless bird that lived on the island of Mauritius. The dodo became extinct in the 1600's.

1. What does the word extinct mean? What's the difference between an endangered species and an extinct species?
2. Research the dodo bird. How tall was it? How much did it weigh? What did it eat?
3. Describe the dodo's habitat and ways it evolved to live there.



The famous *Edward's Dodo*, painted by Roelant Savery in 1626.



Alice and the Dodo from *Alice's Adventures Wonderland*, by John Tenniel (1865)

CLASSROOM CONNECTIONS

SOCIAL STUDIES/ HISTORY

Alice finds herself in a Wonderland courtroom. While the Wonderland trial is more ridiculous than accurate it is modeled to a British courtroom system.

What were the differences and similarities between a trial in the 1860's held in a British courtroom and a trial held in the United States?

What about present day court proceedings in the United Kingdom versus the United States?





Imagine that you are going to the Mad Hatter's Tea Party. Design the hat that you would wear to the occasion.





ALICE WORD SEARCH

Backwards, forwards, vertical, horizontal, or diagonal.
Can you find all 24 words?

FAOZ I ADCGALQAQUEENOFHEARTSFEPHOA
LRAWNDOAMADHATTERMJGXPKMJYAICPLC
ABOAVAONRHTWEEDLEDEEXHUPABHLEIHA
MEMGTFRBESAHEDGEHOGSEDI EURKCGAT
ILSDRPSYKINDFVOBXFULEOEAIPTEKLME
NXHOKINGOFHEARTSSSJPLCWHETELGAEAR
GCSTGQUAJBFXKAEPOADREGAVANLPNTSP
OEKRADAISIESFLAGIEYADUCHESSJLSII
SPGWHITERABBITJSEZAESTUOCBKVHXGL
QEJYIASAOPMALFSWSPYYIATASDRAUGIL
ASJBCHESHIRECATTFIEAJGXGSRPYKGNA
DORMOUSEFUFSLUCORDKTVMZCARDS DUCR

ALICE
WHITE RABBIT
KEY
FLAMINGOS
CHESHIRE CAT
KING OF HEARTS
HEDGEHOGS
DOORS

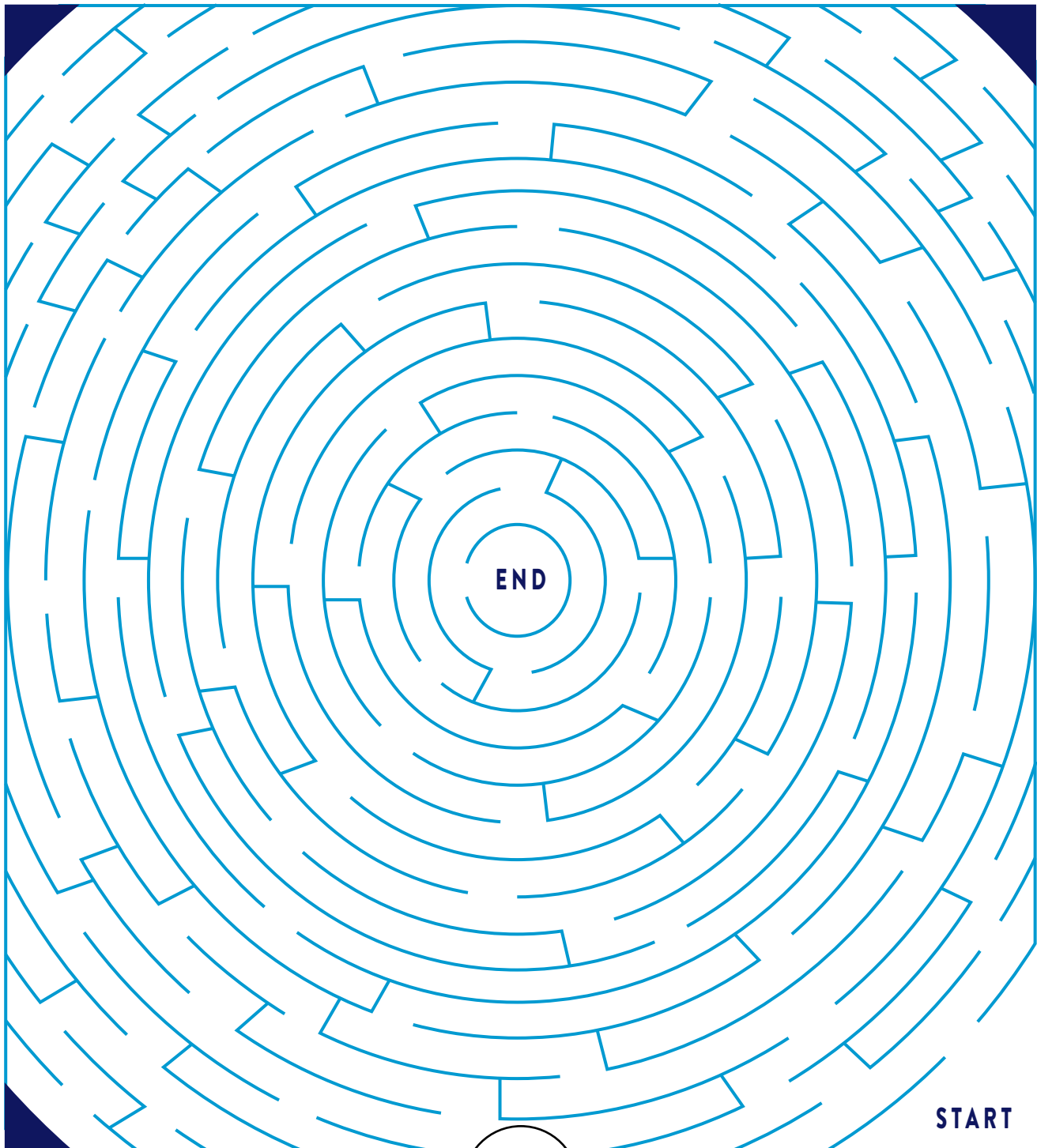
ROSES
QUEEN OF HEARTS
FISH
FROG
DUCHESS
PIGLETS
DORMOUSE
DAISIES

CATERPILLAR
MAD HATTER
TWEEDLE DEE
TWEEDLE DUM
GUARDS
JOKER
EAGLET
CARDS



WHITE RABBIT MAZE

Can you find your way down the rabbit hole?





ALICE SEARCH-AND-FIND

Alice dropped all of the things she was carrying when she fell down the rabbit hole. Can you help find all of Alice's missing items?



- ALICE
- THE WHITE RABBIT
- 1 CATERPILLAR
- 1 HEDGEHOG
- 1 TEA POT
- 3 POTION BOTTLE
- 3 FLAMINGOS
- 5 KEYS
- 5 MUSHROOMS
- 5 TEA CUPS
- 5 HEART CARDS
- 5 DIAMOND CARDS
- 5 CLUB CARDS
- 5 SPADE CARDS
- 5 POCKET WATCHES

GAME ANSWERS

LAOZ IADCGALQAQUEENOFHEARTSFEPHOA
LRAWND OAMADHATTERMJGXPKMJYAICPLG
ABOAVAONRHTWEEDLEDEEXHUPABHLEIHA
MEMGTFRBESAHEDGEHOGSEDI EURKCGAT
LSDRPSYK NDFVOBXFULEOEAIPT EKLME
NXHOKINGOFHEARTSS JPLCWHETELGAEAR
GCSTGQUAJBFXKAEPOADREGAVANLNPNTSP
OEKRADAISIESFLAGIEYADUCHESSJLSI
SPGWHITERABBITJSEZAESTUOCBKVHXL
QEJYIASAOPMALFSWSPYYIATASDRAUGIL
ASJBCHESHIRECATTFIEAJGXGSRPYKGNA
DORMOUSEFUFSLUCORDKTMVZCARSDUCR

